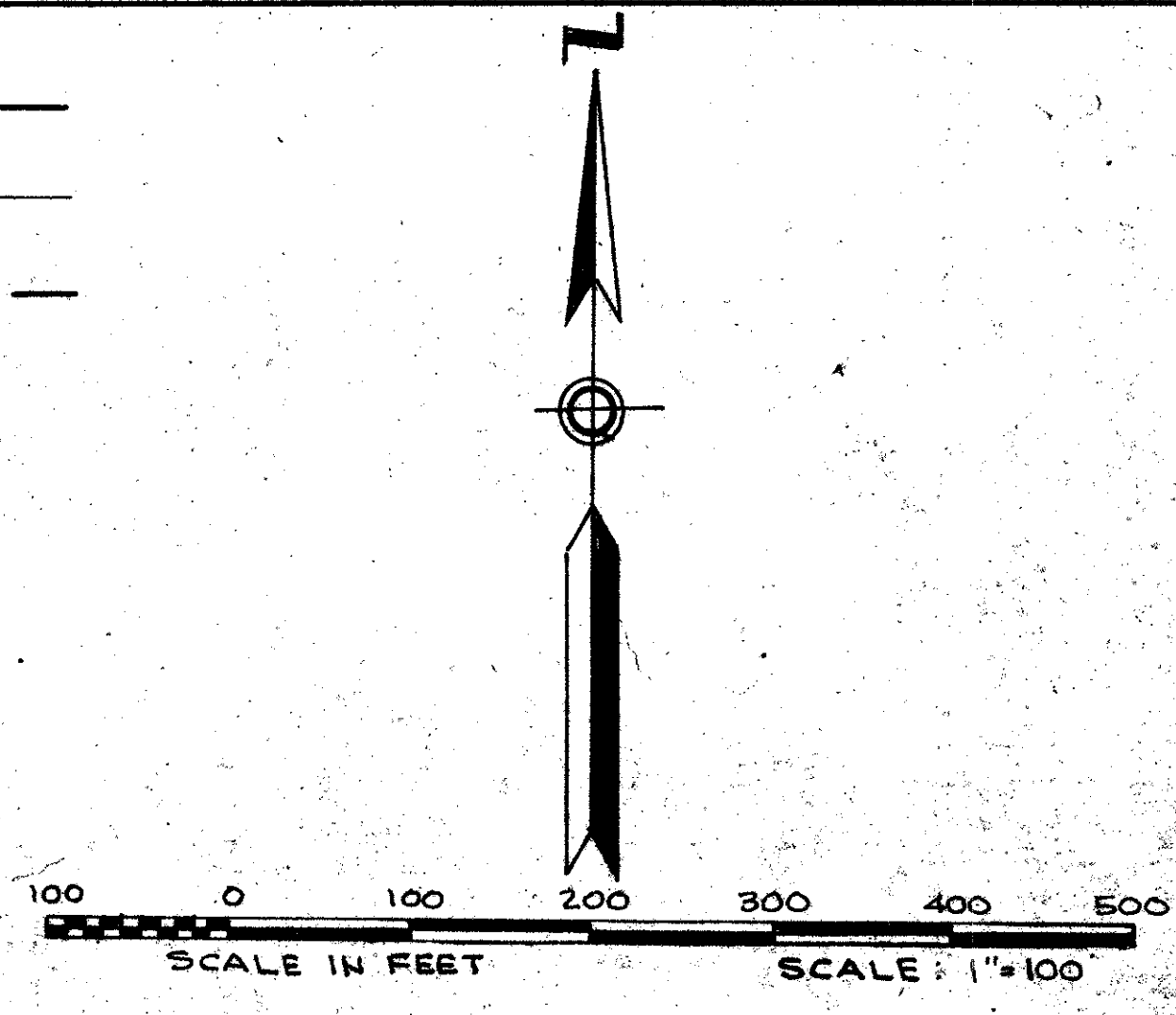
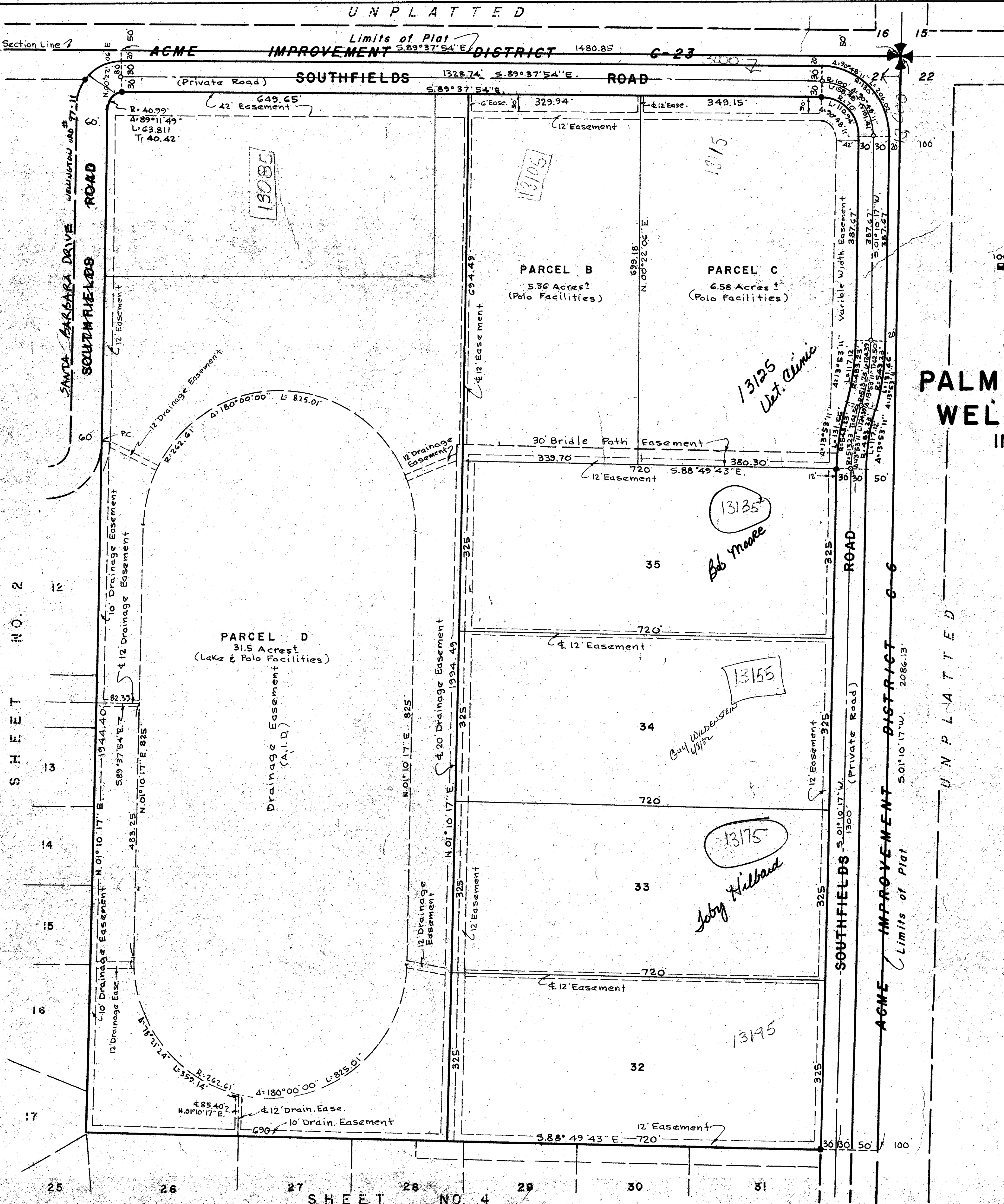


39-21

21



STATE OF FLORIDA  
 COUNTY OF PALM BEACH  
 This Plat was filed for record at  
 this day of \_\_\_\_\_, 1979  
 and duly recorded in Plat Book No. \_\_\_\_\_  
 on page \_\_\_\_\_  
 JOHN B. DUNKLE, Clerk Circuit Court  
 By \_\_\_\_\_ D.C.

**SOUTHFIELDS - PHASE I OF  
 PALM BEACH POLO AND COUNTRY CLUB  
 WELLINGTON COUNTRY PLACE - P.U.D.**  
 IN PART OF SECTION 21, TWP. 44S., RGE. 41E.  
 PALM BEACH COUNTY, FLORIDA  
 IN 4 SHEETS SHEET NO. 3  
 GEE & JENSON  
 ENGINEERS-ARCHITECTS-PLANNERS, INC.  
 WEST PALM BEACH, FLORIDA  
 JULY 1979

**NOTES**

- All bearings shown hereon are relative to an assumed meridian used throughout Wellington.
- Building Setback Lines shall be as required by Palm Beach County Zoning Regulations.
- There shall be no buildings or other structures placed on Utility Easements.
- There shall be no buildings or any kind of construction or trees or shrubs placed on Drainage Easements.
- Easements are for Public Utilities, unless otherwise noted.
- denotes Permanent Reference Monument.
- denotes Permanent Control Point.
- Where Utility Easements and Drainage Easements cross, Drainage Easements shall take precedent.

*See approved site plan Southfield P.B. Plot + C. Club et. 39 app'd 10/19/79 Pet. 76-60*

0333-303  
 RE PUD New

SOUTHFIELDS-PHASE I P.B. Plot  
 COUNTRY CLUB.

39/21

SHEET NO. 2

SHEET NO. 4

DRAWING NUMBER

DRAWING NUMBER